

# VAPOR PALISADE CLIMBER



Offering premier safety features, best-in-class serviceability, and versatile ease-of-use, our Palisade Climber has been crafted to be rich in experience for exercisers and easy to maintain for your facility.

## FEATURES

- One of the deepest steps in the industry with 217 sq. inches per step
- AC motor for durability, low noise, and smooth motion
- Step-up assistance with rear steps and integrated side pegs
- Dual-braking system for extra safety

## SPECIFICATIONS

DIMENSIONS (L X W X H)  
60.4" x 31.5" x 87.5" /  
153 cm x 80 cm x 222 cm

STEP DIMENSIONS  
11.2" x 20" x 8" /  
28 cm x 51 cm x 20 cm

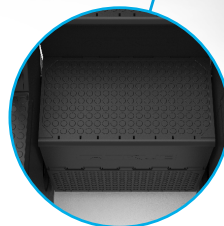
STEP UP HEIGHT  
13.3" / 34 cm

PRODUCT WEIGHT  
408 lbs / 185 kg

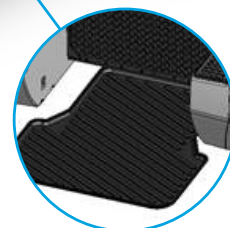
COLOR  
Matte Black



Rear steps provide user-friendly step-up assistance



Large Platform



Optional Sweat Tray

## CONSOLE OPTIONS



**UNITE 16"  
TOUCHSCREEN**



**UNITE 10"  
TOUCHSCREEN**



**UNITE LED  
CONSOLE**

## VAPOR PALISADE CLIMBER

TECHNICAL SPECIFICATIONS	Power Source	120V & 220V w/ step-up and step-down transformers (NEMA 5-15)
	Cord Length	12' / 3.7 M
	Drive System	AC Drive system
	Resistance Source	Double-Braking System
	Resistance Levels	20
	Frame Construction	Anti-rust design with sweat prevention
	Sweat Tray	Optional
	Step up platform	Rear, Side, & Dipping handrail
	Safety System	Additional Photo-Interrupt Safety Sensor
	Quick Access Control	(1) Resistance Level thumb switch (Left) and (1) Stop/Pause thumb switch (Right)
Contact Heart Rate Monitoring	Yes	
AVAILABLE CONSOLES	UNITE 16", UNITE 10", and UNITE LED	
WORKOUTS	UNITE 16" and UNITE 10" Consoles	CALORIE GOAL, CARDIO CHALLENGE, DISTANCE GOAL, DRAW YOUR OWN, FAT BURN, FIREFIGHTER, FLOORS, HRC CRUISE CONTROL, MONUMENT WORKOUT, QUICK START, ROLLING HILLS, SPEED INTERVALS, TARGET HRC, TIME GOAL, VIRTUAL RUNS
	UNITE LED Console	CARDIO CHALLENGE, CALORIE GOAL, DISTANCE GOAL, FAT BURN, FIREFIGHTER, FLOORS, HRC CRUISE CONTROL, QUICK START, ROLLING HILLS, SPEED INTERVALS, TARGET HRC, TIME GOAL
EXTRAS	Accessories	Water Bottle Holders (2), Over Molded Reading Rack/Tablet Holder
PHYSICAL SPECIFICATIONS	Dimensions	60.4" x 31.5"x 87.5" / 153 cm x 80 cm x 222 cm
	Machine Weight	408 lbs / 185 kg
	Shipping Weight	518 lbs / 235 kg
	Maximum User Weight	400 lbs / 181 kg
	Step Dimensions	11.2" x 20" x 8" / 28 cm x 51 cm 20 cm
	Step-Up Height	13.3" / 34 cm
	Minimum Ceiling Height Recommendation	10 feet
	Portability	Four (4) Transport Wheels
WARRANTY	Frame	7 Years
	Parts	3 Years
	Labor	2 Years

Warranties outside the U.S. and Canada may vary - Please contact your dealer for details. Specifications subject to change without notice.

